



**TWO GREAT MEDICAL OFFICE
SUITES FOR SUBLEASE**

MEDICAL OFFICE SPACE FOR SUBLEASE

WHAT MATTERS TO YOU >

LOCATION

RECOGNIZED AS ONE OF THE DC
METRO AREA'S MOST PRESTIGIOUS
MEDICAL ADDRESSES

SIZE

SUITE 1540 - 1,638 RSF
SUITE 1610 - 1,321 RSF

BARLOW BUILDING

5454 WISCONSIN AVENUE
SUITES 1540, 1610
CHEVY CHASE, MD 20815

ADDITIONAL FEATURES

- Suite 1540 – high end built out physical therapy suite with Wisconsin Ave views and elevator lobby presence, waiting area, open gym/pt/therapy space and one private office
- Suite 1610 – built out efficient medical suite with waiting area, reception, 5 offices/exams with bathroom and lab/kitchen area
- Located directly across from the Friendship Heights Metro, right at the DC/Maryland border
- Iconic 17-story, 294,000 SF Class-A medical office building
- Positioned within a high-income market with a strong commercial payer mix



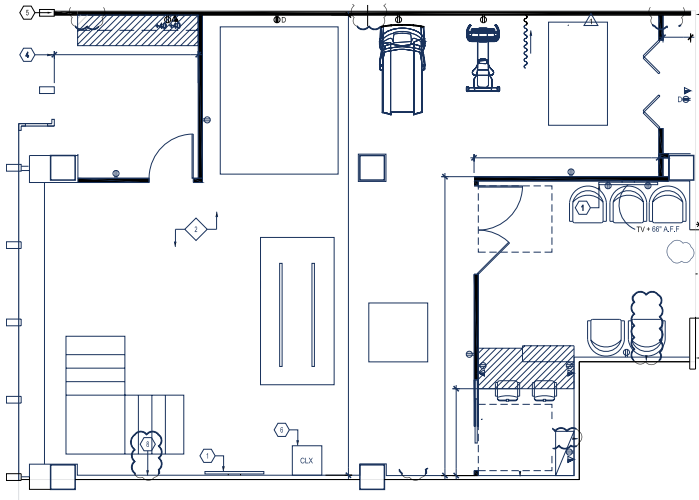
CONTACT US TODAY

ANDREW PAPANTONIOU
ANDREW@GZREALTY.NET
703-887-2513

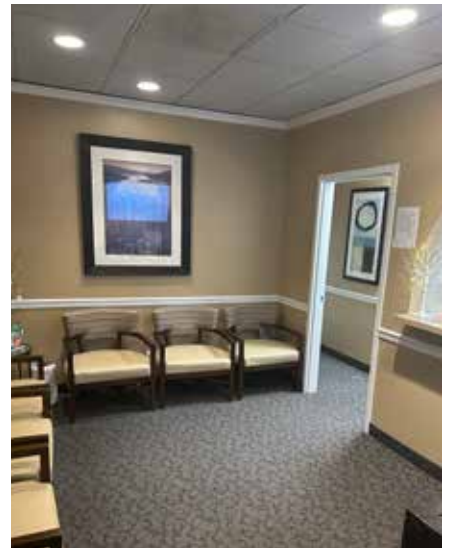
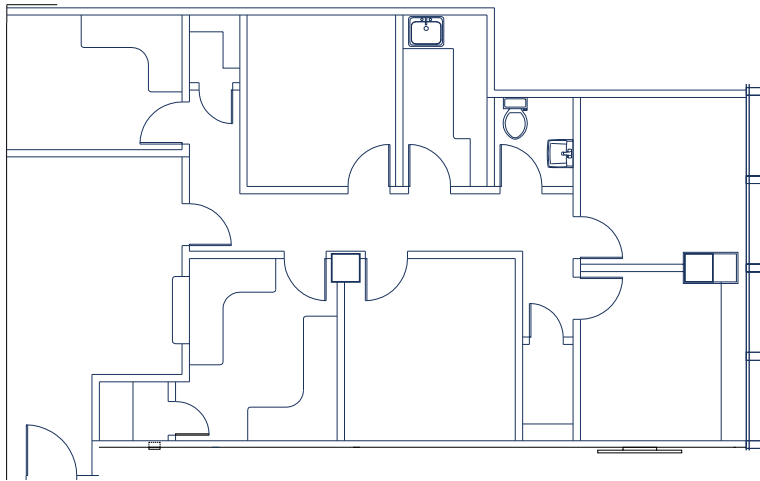
MICHAEL FRIEDLANDER
MICHAEL@GZREALTY.NET
301-502-6868

3 Bethesda Metro Center, Suite 700 // Bethesda, MD 20814
301.235.1300 // gzrealty.net

SUITE 1540 - 1,638 RSF



SUITE 1610 - 1,321 RSF



CONTACT US TODAY

ANDREW PAPANTONIOU
ANDREW@GZREALTY.NET
703-887-2513

MICHAEL FRIEDLANDER
MICHAEL@GZREALTY.NET
301-502-6868

3 Bethesda Metro Center, Suite 700 // Bethesda, MD 20814
301.235.1300 // gzrealty.net