

MEDICAL OFFICE SPACE FOR SALE

WHAT MATTERS TO YOU...



LOCATION

MINUTES TO HOLY CROSS
GERMANTOWN HOSPITAL



SIZE

3,582 SQUARE FEET



**UNIQUE OPPORTUNITY TO OWN A
TURN-KEY MEDICAL OFFICE SPACE**

TREVION CORPORATE PARK

12800 MIDDLEBROOK RD
GERMANTOWN, MD 20874

ADDITIONAL FEATURES

- High-end newly builtout medical space with sinks in exam rooms
- Motivated seller and flexible lease terms also available
- Strong medical tenant mix for referrals including Primary Care, Orthopedics, Ophthalmology, OBGYN, Physical Therapy, Neurology



CONTACT US TODAY

ADRIAN A. DOMINGUEZ
ADRIAN@GZREALTY.NET

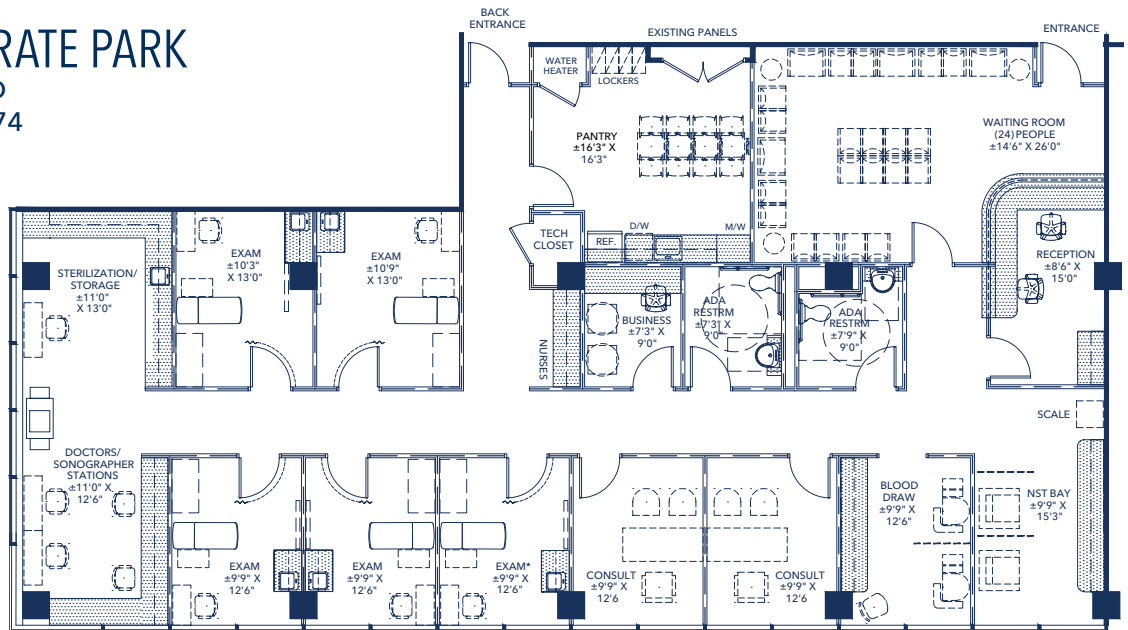
ALEXA E. GITTLESON
ALEXA@GZREALTY.NET

3 Bethesda Metro Center, Suite 700 // Bethesda, MD 20814
301.235.1300 // gzrealty.net





TREVION CORPORATE PARK
 12800 MIDDLEBROOK RD
 GERMANTOWN, MD 20874



CONTACT US TODAY

ADRIAN A. DOMINGUEZ
 ADRIAN@GZREALTY.NET

ALEXA E. GITTLESON
 ALEXA@GZREALTY.NET

3 Bethesda Metro Center, Suite 700 // Bethesda, MD 20814
 301.235.1300 // gzrealty.net